



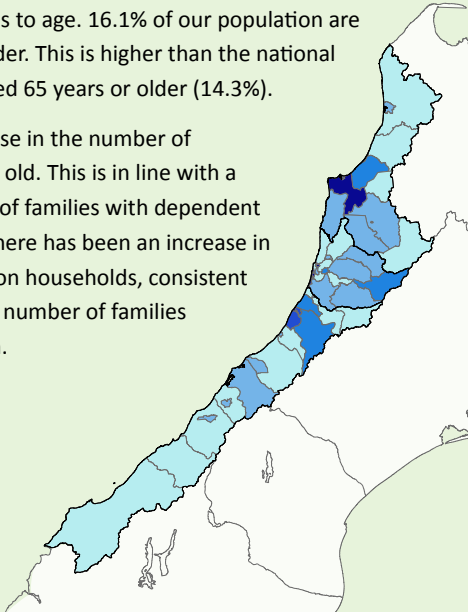
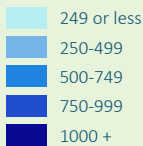
Our resident population has increased by 2.6% since 2006, to 32,145. This is a slower rate of growth than at the last census. However, the rate of population growth has also slowed nationally.

The Grey District has the largest population in the region, with a resident population of 13,371. The Buller District has a population of 10,470 residents. The Westland District has a population of 8,304 residents.

Our population continues to age. 16.1% of our population are now aged 65 years or older. This is higher than the national proportion of people aged 65 years or older (14.3%).

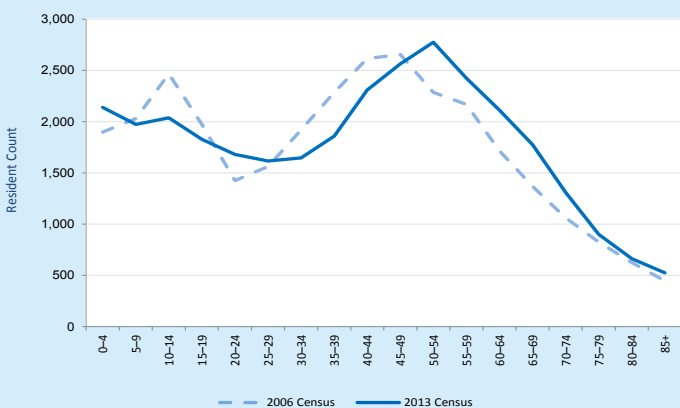
There has been a decrease in the number of children aged 0-14 years old. This is in line with a decrease in the number of families with dependent children in the region. There has been an increase in the number of one-person households, consistent with the decrease in the number of families with dependent children.

Resident Population 2013



Our population is also becoming more ethnically diverse. We now have greater proportions of Māori, Pacific and Asian ethnicities than in 2006. The percentage of Māori has increased from 9.7% to 10.5%. Our Māori population are younger, with 42.4% aged 0-19 years-old (compared to 24.8% of the total West Coast population).

West Coast DHB usual resident count by age group in 2006 & 2013



What We Don't Know

Updated population projections and estimates

The current Statistics New Zealand population projections are still based on the 2006 Census results. Projections based on the 2013 Census results will not be available until December 2014. Updated population estimates will be made available in August 2014.

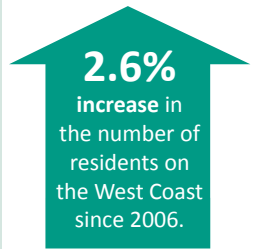
WHAT THE 2013 CENSUS TELLS US

16.1%



of our population are aged 65 or older, up from 13.8% in 2006.

32,145 Residents



2.6% increase in the number of residents on the West Coast since 2006.



30.7%

of households only have one resident.

10.5%

of our population are

Māori

0.8%

of the total New Zealand resident population live in the West Coast. However, the West Coast is one of the largest DHBs by geographic region.



20.5% of those aged 15 years or older smoke regularly, down from 25.7% in 2006.

20.5%



3.4% of households have no access to telecommunication systems. This is the highest proportion of any region in New Zealand.



4.7% decrease in the number of families with dependent children.

15% decrease in the number of single parent families with dependent children.

What Does This Mean?

Our aging population

The West Coast DHB has an increasing elderly population. While progress has been made to address the needs of older people, new service models will need to continue to be developed.

Our population distribution

We have a population that is spread over a vast geographic distance. We also have households that are hard to contact, with 3.4% without access to any telecommunications. This presents a challenge in the delivery of health services within the West Coast and demonstrates the importance of mobile delivery of services to the community.

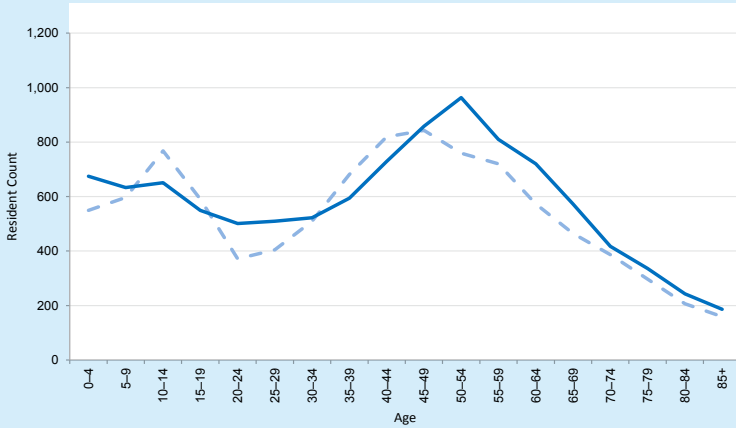


CENSUS Demographic Changes by DISTRICT

Please note: Due to the difference in resident populations the scale of each graph varies.
--- 2006 Census — 2013 Census

Buller District

usual resident count by age group in 2006 and 2013



768
more residents living in Buller than in 2006.



No change in the number of families with dependent children. The other districts have both had a decrease.

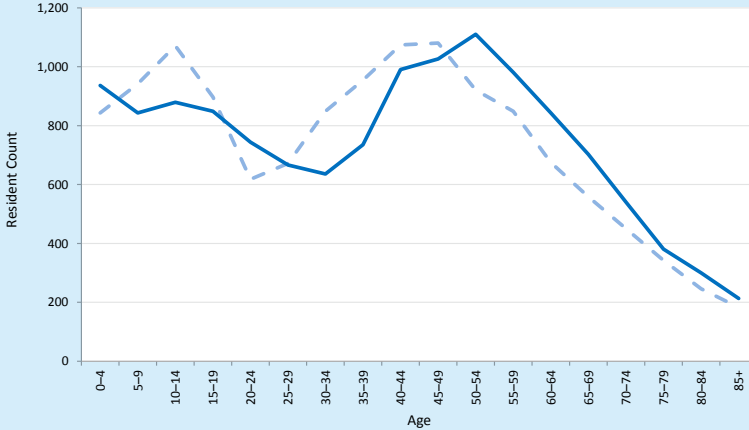


16.7%

of Buller residents are aged 65 years or older, up from 15.7% in 2006. This is the highest proportion on the Coast.

Grey District

usual resident count by age group in 2006 and 2013



150
more residents living in Grey than in 2006.

19.9%

of Grey residents are aged under 15. This is the highest proportion on the Coast.

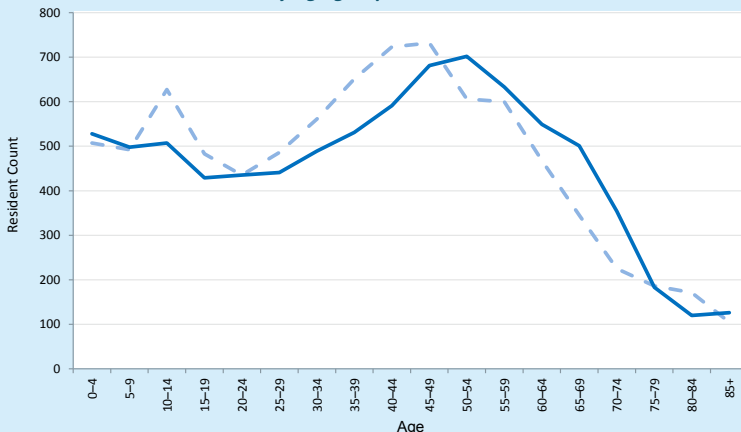


16%

of Grey residents are aged 65 years or older, up from 13.5% in 2006.

Westland District

usual resident count by age group in 2006 and 2013



4.1% of Westland households have no access to telecommunication systems.

99
fewer residents living in Westland than in 2006.

13.4%
of the population are

Māori

This is the highest proportion on the Coast.